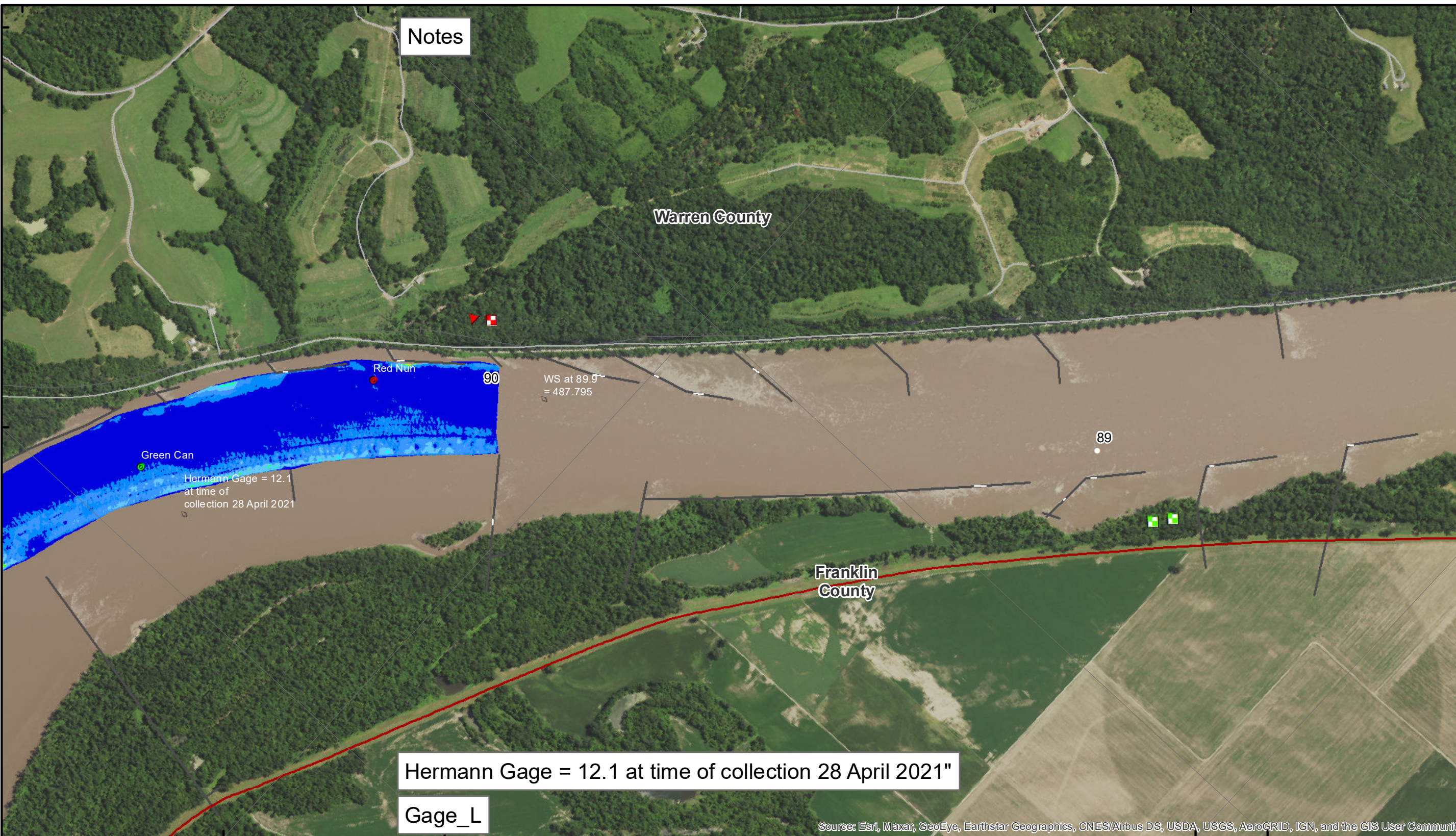


38°43'N 91°18'W 38°41'N 91°17'W



Notes

Warren County

Franklin County

Hermann Gage = 12.1 at time of collection 28 April 2021"

Gage\_L

WS at 89.9' = 487.795

Hermann Gage = 12.1 at time of collection 28 April 2021

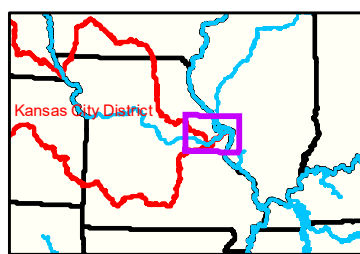
Source: Esri, Maxar, GeoEye, Earthstar Geographics, CNES/Airbus DS, USDA, USGS, AeroGRID, IGN, and the GIS User Community



**DISCLAIMER:** The U.S. Army Corps of Engineers (USACE) provides this information as a service to the public. It is not intended for use in any legal proceeding or for any other purpose. The USACE makes no warranty, express or implied, regarding the accuracy, reliability, or completeness of the information provided. The USACE is not responsible for any errors or omissions in this information. The user assumes all liability for any use of this information. The USACE is not responsible for any damage or injury resulting from the use of this information. The USACE is not responsible for any loss of data or information resulting from the use of this information. The USACE is not responsible for any other consequences resulting from the use of this information.

KANSAS CITY DISTRICT MISSOURI RIVER AREA OFFICE	
Submitted By:	MRAO
Reviewed By:	MRAO
Checked By:	MRAO

**Survey Information**  
 MO\_01\_LMR  
 MO\_01\_LMR\_20210428\_CS\_90\_0\_90\_0\_SORT  
 28 April 2021



**LEGEND**

< 8	< 8 ft	Green Passing	Green
8 - 9	8 - 9 ft	Red Passing	Red
9 - 9.5	9 - 10 ft	Green Crossing	Green CAN
9.5 - 10	10 - 12 ft	Red Crossing	Red NUN
10 - 12	River Mile		
12 - 14	Sailing Line		
14 - 16	BSNP Structure		
> 16	Levee		
		Junction	

**Buoy**

0 312.5 625 937.5 1,250 2,500 Feet

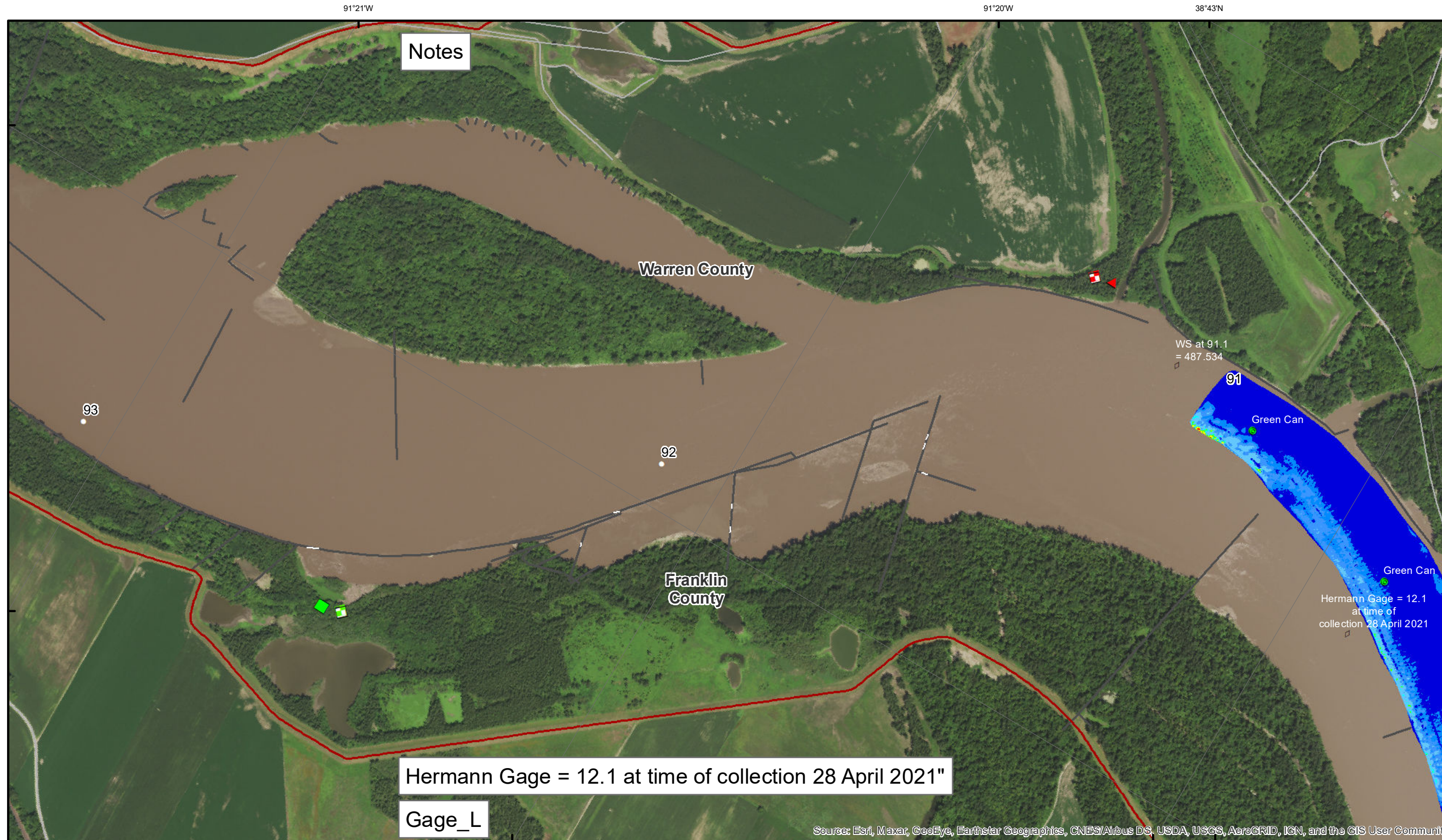
**NOTES:**  
 Horizontal Coordinate System:  
 World Geodetic System of 1984 (WGS84), projected to the Universal Transverse Mercator (UTM) Zone 15 North.  
 Distance units in U.S. Survey Feet

Vertical Datum:  
 Soundings are shown in feet and indicated depths are referenced to water surface at time of collection.

The information depicted on this map represents the results of a survey conducted on the date indicated and can only be considered to represent the general condition existing at that time.

The location of navigation aids are based on and provided by the U.S. Coast Guard.

**Sheet Number**  
 41 of 46



Notes

Warren County

Franklin County

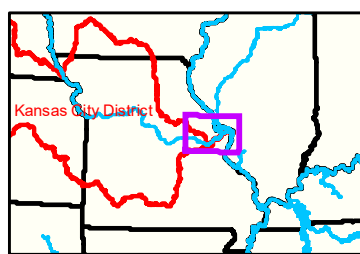
Hermann Gage = 12.1 at time of collection 28 April 2021"

Gage\_L

WS at 91.1 = 487.534

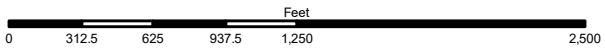
Hermann Gage = 12.1 at time of collection 28 April 2021

Source: Esri, Maxar, GeoEye, Earthstar Geographics, CNES/Airbus DS, USDA, USGS, AeroGRID, IGN, and the GIS User Community



**LEGEND**

	< 8		< 8 ft		Green Passing		Green		Green CAN
	8 - 9		8 - 9 ft		Red Passing		Red		Red NUN
	9 - 9.5		9 - 10 ft		Green Crossing		Junction		
	9.5 - 10		10 - 12 ft		Red Crossing				
	10 - 12		River Mile						
	12 - 14		Sailing Line						
	14 - 16		BSNP Structure						
	> 16		Levee						



**NOTES:**  
 Horizontal Coordinate System:  
 World Geodetic System of 1984 (WGS84), projected to the Universal Transverse Mercator (UTM) Zone 15 North.  
 Distance units in U.S. Survey Feet

Vertical Datum:  
 Soundings are shown in feet and indicated depths are referenced to water surface at time of collection.

The information depicted on this map represents the results of a survey conducted on the date indicated and can only be considered to represent the general condition existing at that time.

The location of navigation aids are based on and provided by the U.S. Coast Guard.



**DISCLAIMER:** The U.S. Army Corps of Engineers (USACE) provides this information as a service to the public. It is not intended to be used for any purpose other than that for which it was prepared. The USACE makes no warranty, express or implied, regarding the accuracy, reliability, or completeness of the information provided. The USACE is not responsible for any errors or omissions in this information. The user assumes all liability for any use of this information. The USACE is not responsible for any damage or injury resulting from the use of this information. The USACE is not responsible for any loss of data or information resulting from the use of this information. The USACE is not responsible for any loss of data or information resulting from the use of this information. The USACE is not responsible for any loss of data or information resulting from the use of this information.

KANSAS CITY DISTRICT MISSOURI RIVER AREA OFFICE	
Submitted By:	MRAO
Reviewed By:	MRAO
Approved By:	MRAO

**Survey Information**

MO\_01\_LMR  
 MO\_01\_LMR\_20210428\_CS\_90\_0\_90\_0\_SORT  
 28 April 2021

**Sheet Number**  
 42 of 46